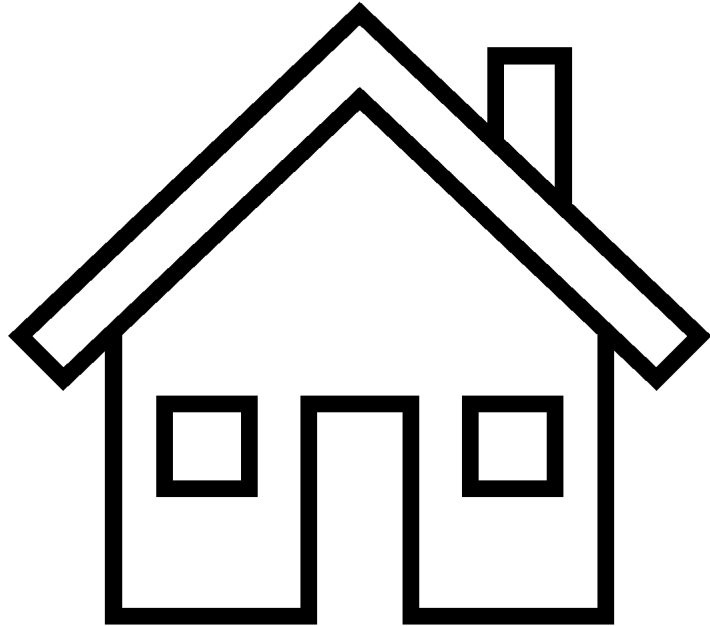


Discharge Hub Performance

Discharge Pathways



Pathway 0 – home with no support or restart of an existing service



Pathway 1 – home with a newly commissioned service (reablement, bridging, package from the private market)



Pathway 2 – discharged to a short term placement (intermediate care bed, placement from the private market) with a view to returning home



Pathway 3 – Discharged to short term placement with a view to most likely needing long term residential or nursing care

Pre Covid vs Post Covid Comparison – average number of discharges per day

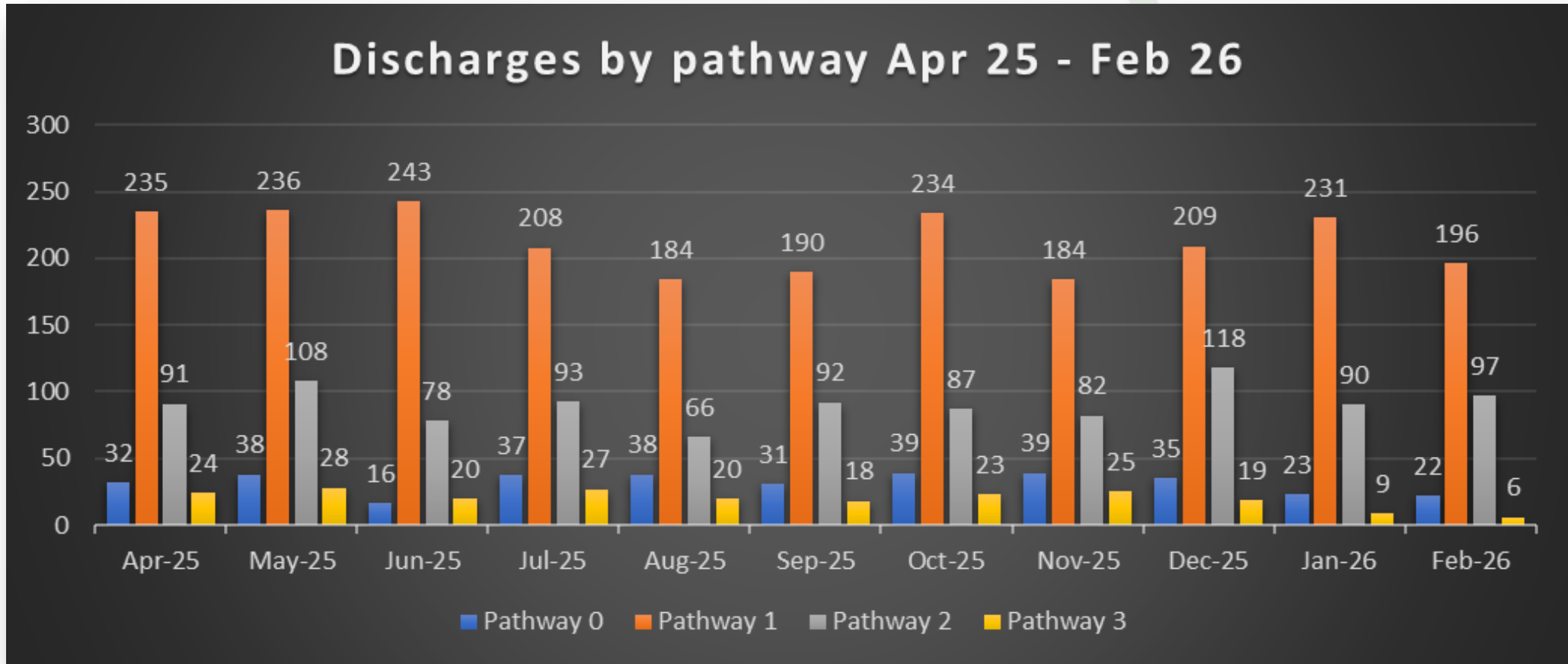
Apr-19	May-19	Jun-19	Jul-19	Aug-19	Sep-19	Oct-19	Nov-19	Dec-19	Jan-20	Feb-20	Annual Average
9.1	9.4	8.3	9.2	8.7	9.5	10.5	10.2	11	12.1	9.6	

Apr-25	May-25	Jun-25	Jul-25	Aug-25	Sep-25	Oct-25	Nov-25	Dec-25	Jan-26	Feb-26	Annual Average
12.7	13.2	11.9	12.2	9.9	11.0	12.4	10.6	12.3	11.3	11.5	

Difference between 19/20 and 25/26											
Apr	May	Jun	Jul	Aug	Sep	Oct	Nov	Dec	Jan	Feb	Annual Average
39.6%	40.4%	43.4%	32.6%	13.8%	15.8%	18.1%	3.9%	11.8%	-6.6%	19.8%	19.9%

March 26 data excluded due to date report created. March 2020 data removed to allow direct comparison

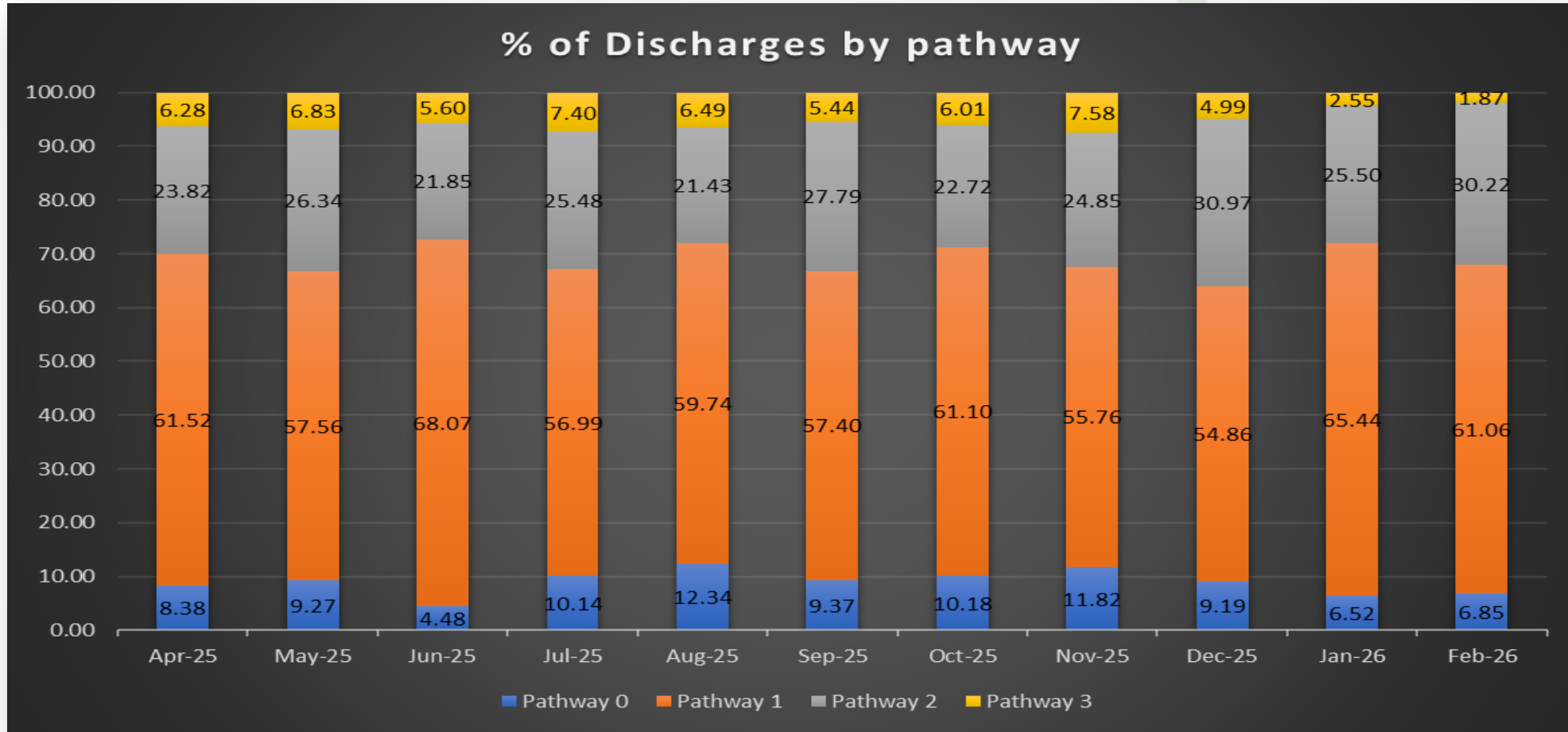
Discharges by Pathway Apr 25 – Feb 26



Pathway 0	Pathway 1	Pathway 2	Pathway 3	Total
350	2350	1002	219	3921



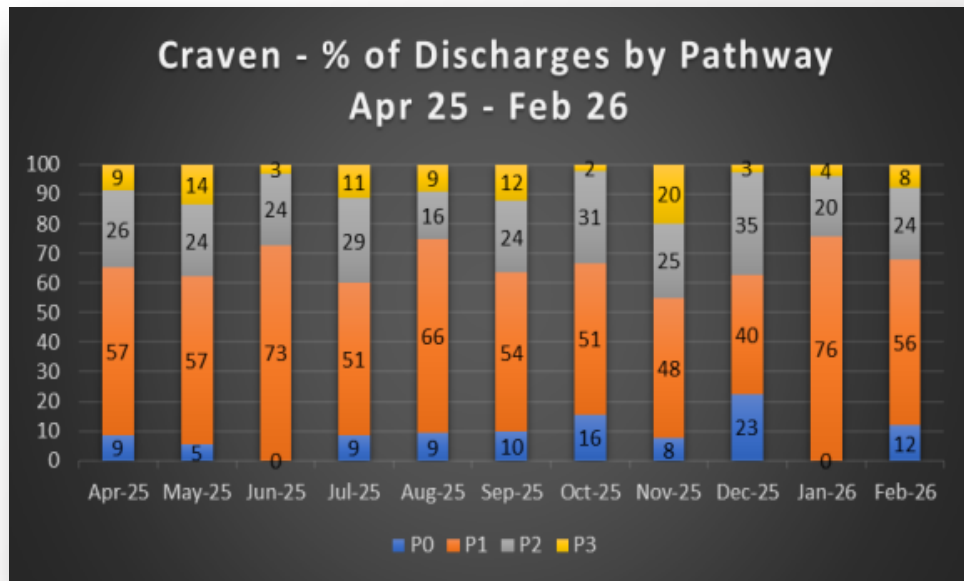
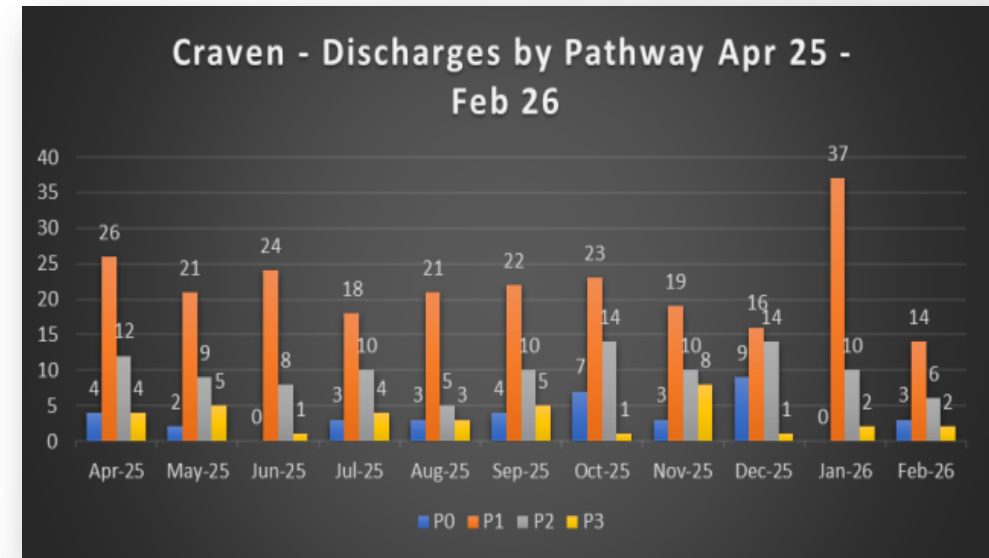
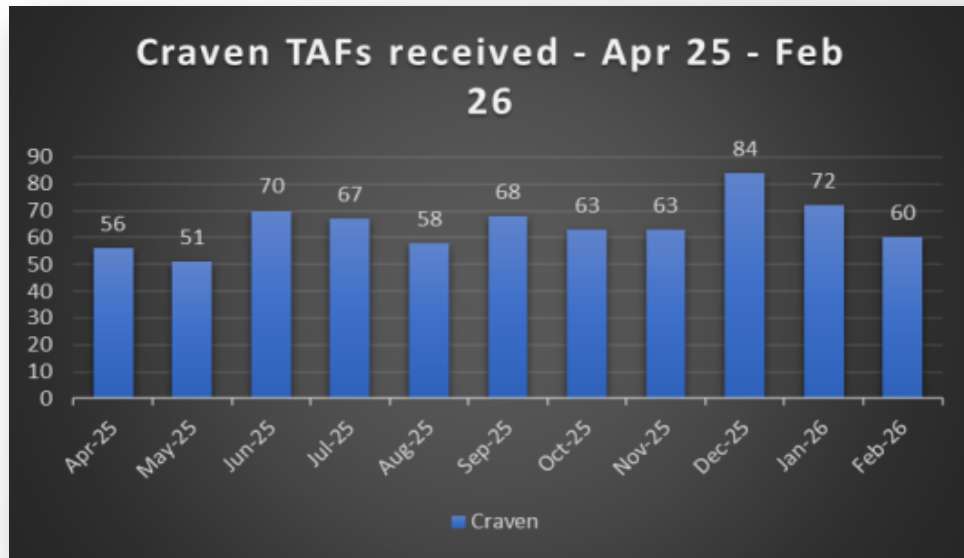
Discharge % by Pathway – Apr 25 – Feb 26



Average P0	Average P1	Average P2	Average P3
8.93%	59.95%	25.56%	5.56%



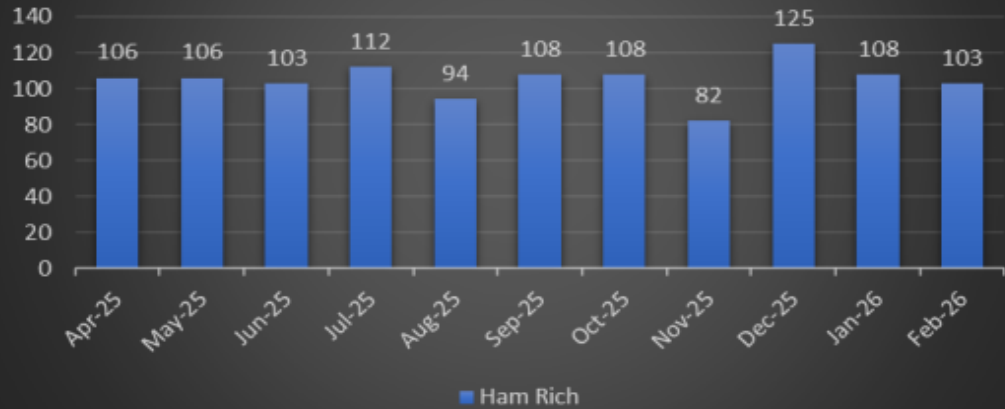
Craven hub - Apr 25 – Feb 26



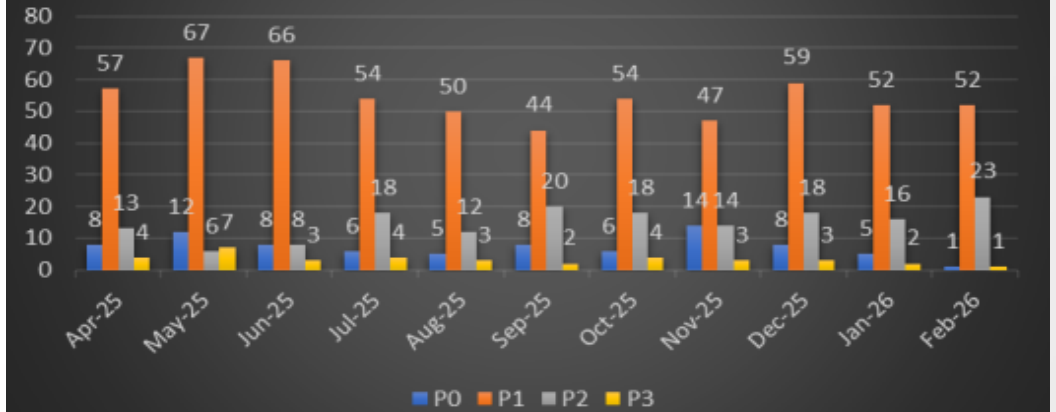
- 712 TAFs received for 25/26 so far, 11% increase compared to same period for 24/25
- 423 discharges for 25/26 so far, 3% decrease when compared to the same period for 24/25
- 66% discharged home
- Approx average times for TAF to discharge for Apr 25 to Feb 26 are as follows:
P0 – 8 days, P1 – 9 days, P2 – 10 days, P3 – 14 days

Ham Rich hub - Apr 25 – Feb 26

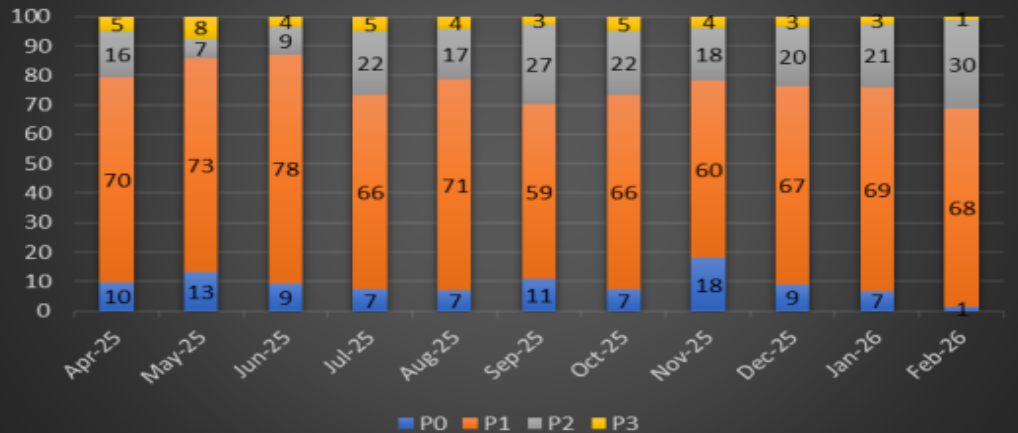
Ham Rich TAFs received - Apr 25 - Feb 26



Ham Rich - Discharges by Pathway Apr 25 - Feb 26

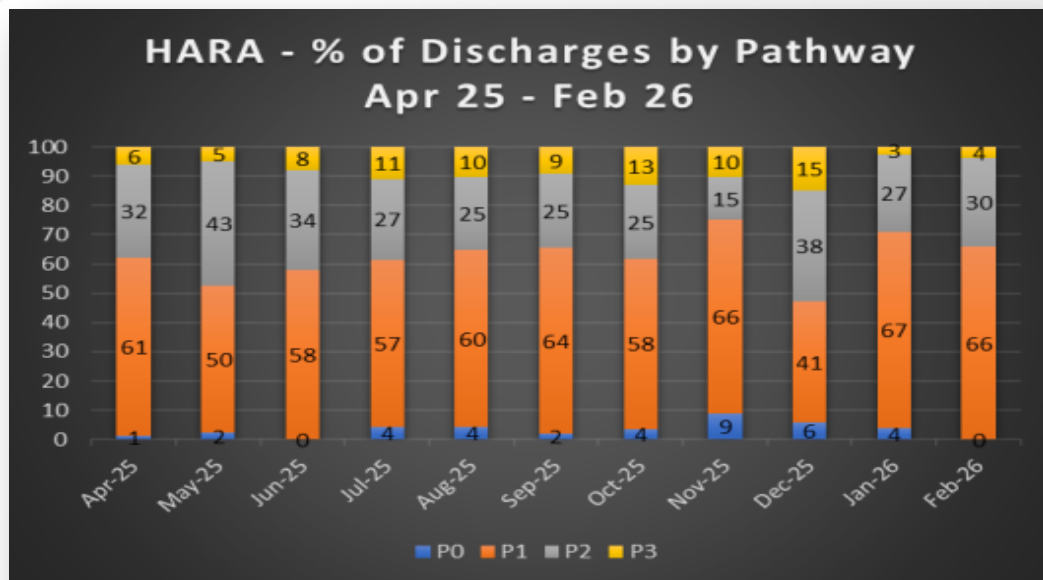
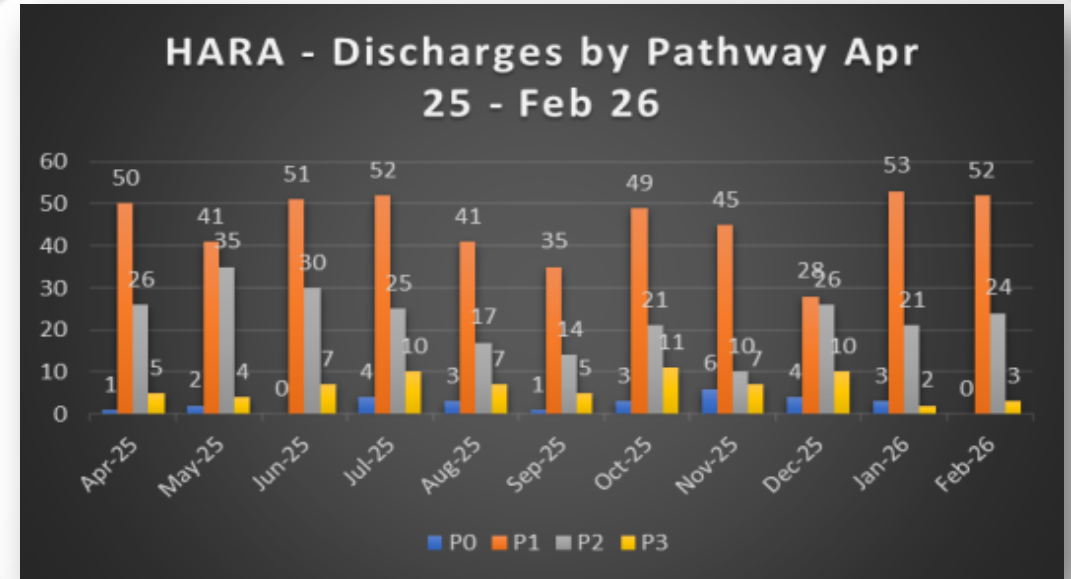
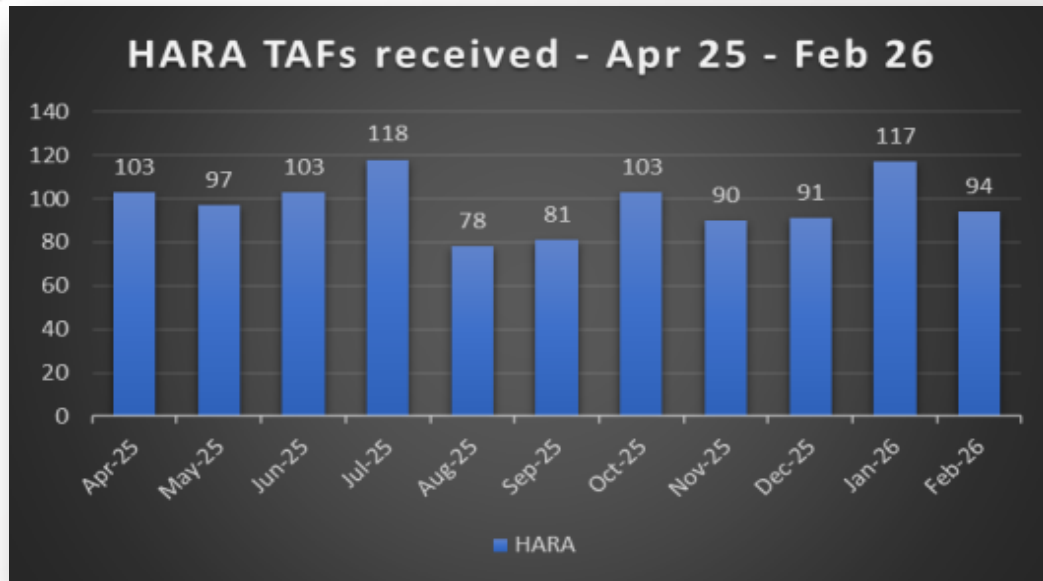


Ham Rich - % of Discharges by Pathway Apr 25 - Feb 26



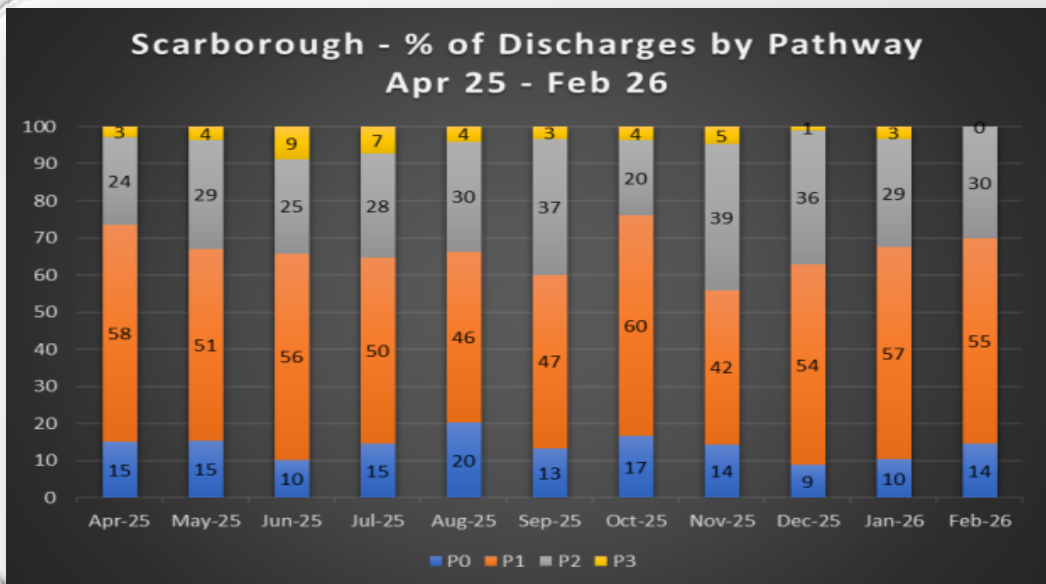
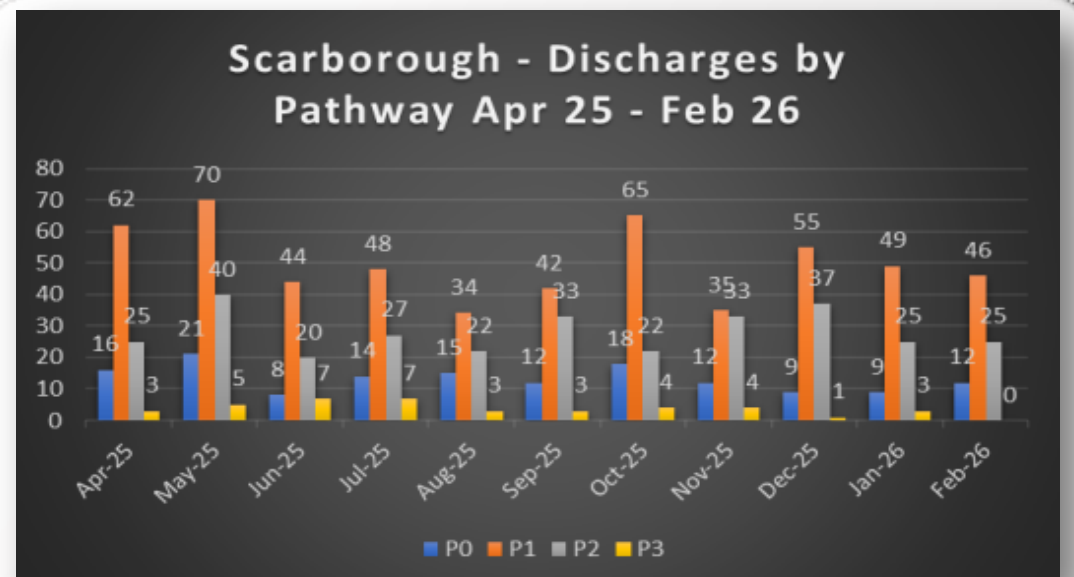
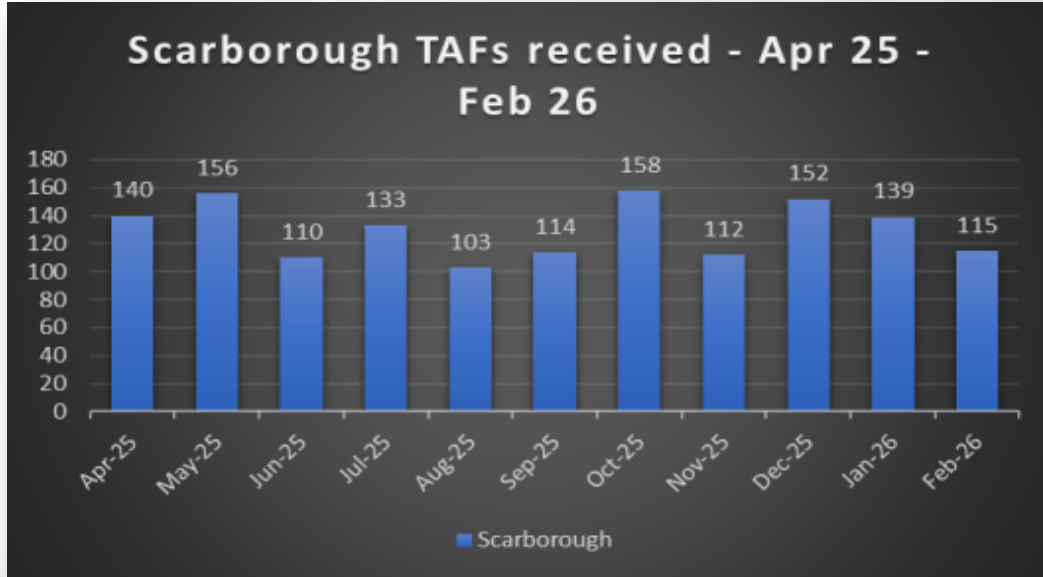
- 1155 TAFs received for 25/26 so far, 14% decrease compared to same period for 24/25
- 885 discharges for 25/26 so far, 15% decrease when compared to the same period for 24/25
- 77% discharged home
- Approx average times for TAF to discharge for Apr 25 to Feb 26 are as follows:
P0 – 5 days, P1 – 6 days, P2 – 15 days, P3 – 19 days

HARA hub - Apr 25 – Feb 26



- 1075 TAFs received for 25/26 so far, 13% decrease compared to same period for 24/25
- 844 discharges for 25/26 so far, 14% decrease when compared to the same period for 24/25
- 62% discharged home
- Approx average times for TAF to discharge for Apr 25 to Feb 26 are as follows:
P0 – 5 days, P1 – 6 days, P2 – 8 days, P3 – 16 days

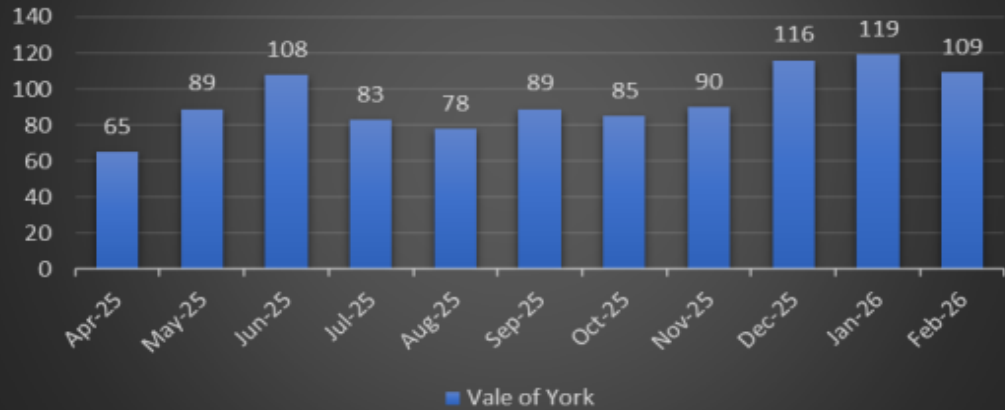
Scarborough hub - Apr 25 – Feb 26



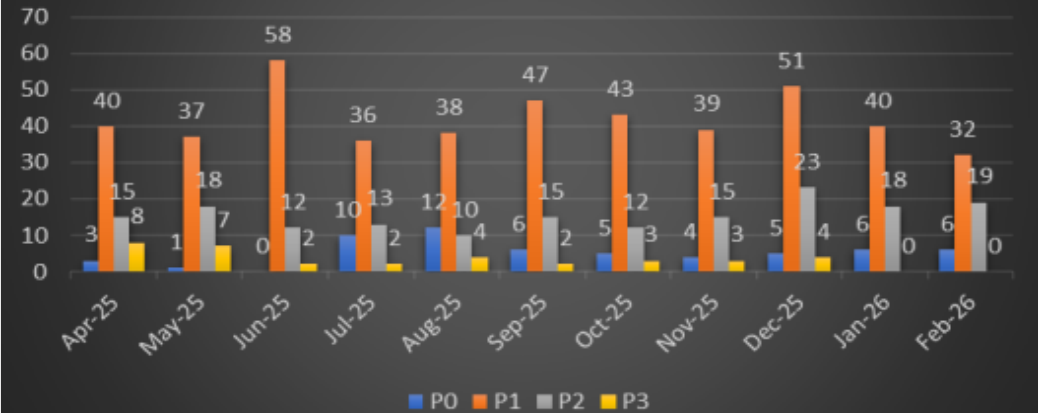
- 1432 TAFs received for 25/26 so far, 10% decrease compared to same period for 24/25
- 1045 discharges for 25/26 so far, 12% decrease when compared to the same period for 24/25
- 67% discharged home
- Approx average times for TAF to discharge for Apr 25 to Feb 26 are as follows:
P0 – 3 days, P1 – 6 days, P2 – 11 days, P3 – 18 days

Vale of York hub - Apr 25 – Feb 26

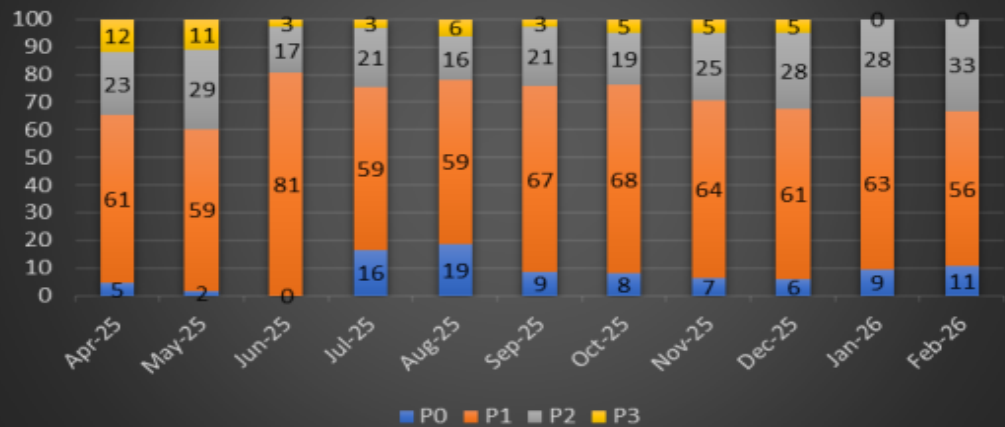
Vale of York TAFs received - Apr 25 - Feb 26



Vale of York - Discharges by Pathway Apr 25 - Feb 26



Vale of York - % of Discharges by Pathway Apr 25 - Feb 26



- 1031 TAFs received for 25/26 so far, 3% increase compared to same period for 24/25
- 724 discharges for 25/26 so far, 1% increase when compared to the same period for 24/25
- 72% discharged home
- Approx average times for TAF to discharge for Apr 25 to Feb 26 are as follows:
P0 – 5 days, P1 – 6 days, P2 – 12 days, P3 – 17 days